

## Dura Z-Spray Assembly Guide

### Box Contents:

- (2) Jobe Valve Assembly
- (1) Accessory Kit 1 – Hardware
- (1) Accessory Kit 2 – Plumbing
- (2) 3/4" Black EPDM Hose. 2 – 6' pieces cut to length
- (1) Z-Spray Base Bracket
- (2) Step Vent lids



### Tools Required:

1. Large Adjustable Wrench
2. (2) 7/16" Combo Wrench
3. Pipe Thread Sealant

### ATTENTION

Apply an even coat of Thread Sealant on male threads. Hand-tighten joints and torque another 1/2 to 3/4 turn until threads are sealed

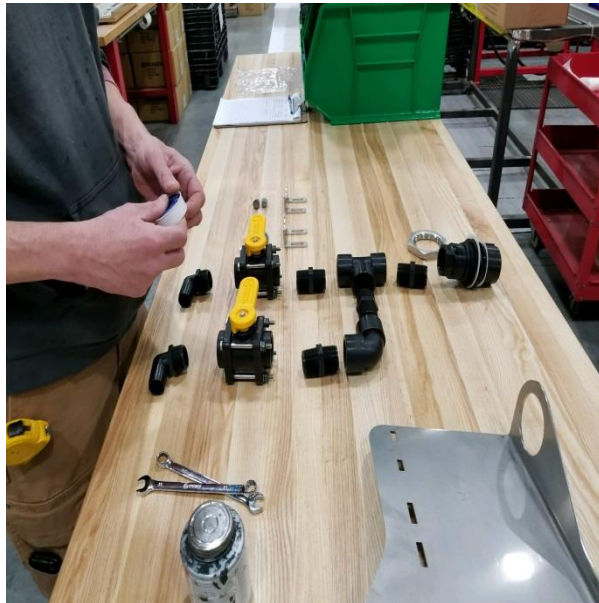
### Accessory Kit 1 - Hardware Contents:

- (1) 2" x 2" Square 5/16" Flat Washer.
- (4) 3/4" Hose Clamp
- (1) 2" FPT Stainless Steel Locknut
- (4) 1/4"-20 x3/4" SS Hex Bolt
- (1) 5/16" – 18 x 1" SS Hex Bolt
- (2) 5/16" SS Extra Heavy Flat Washer
- (8) 1/4" SS Washer
- (1) 5/16" – 18-8 SS Nylon LN
- (4) 1/4" – 20 SS Nylon LN
- (2) Valve Brackets (SS)



## Accessory Kit 2 - Plumbing Contents:

- (2) 1" MPT x 3/4" Str. Hose Barb
- (2) 1" MPT x 3/4" Elbow Hose Barb
- (4) 1" Poly Nipple
- (2) 1" Bolted Ball Valve (3/4" Port)
- (1) 1" Poly Tee
- (1) 1" Dry Break Poppet
- (1) Dry Break Poppet Coupler
- (1) 1" Poly Elbow 90 degree



Before Assembly



After Assembly

Refer to the "Before and After" photos above when assembling the  
"Front Bracket" Assembly

Use an even coat of thread sealant on all connections.

## **Assembly Steps**

Assemble "Front Bracket" Assembly.

Step 1: Attach one 1" Poly Nipple to the bottom (end with nuts & Lock washers) of one 1" Bolted Ball Valve.

Step 2: Attach 1" Poly Nipple from Step 1 to 1" Poly Elbow 90 Degree.

Step 3: Attach one 1" Poly Nipple to the bottom (end with nuts & lock washers) of 2<sup>nd</sup> 1" Bolted Ball Valve.

Step 4: Attach 1" Poly Nipple from Step 3 to 1" Poly Tee.

Step 5: Attach 1" Poly Nipple to 1" Poly Tee from Step 4.

Step 6: Attach 1" Poly Nipple from Step 5 to 1" Poly Elbow 90 Degree from Step 2.

Step 7: Attach 1" Poly Nipple to 1" Dry Break Poppet.

Step 8: Attach one Valve Bracket to one 1" Bolted Ball Valve.

Step 9: Attach 2<sup>nd</sup> Valve Bracket to 2<sup>nd</sup> 1" Bolted Ball Valve.

Step 10: Insert 1" Dry Poppet from Step 7 into opening on Base Bracket.

Step 11: Loosely attach 2" SSLN on Poly Nipple end of the Dry Poppet installed in Step 10.

Step 12: Attach Poly Tee from Step 5 to the Poly Nipple in Step 11.

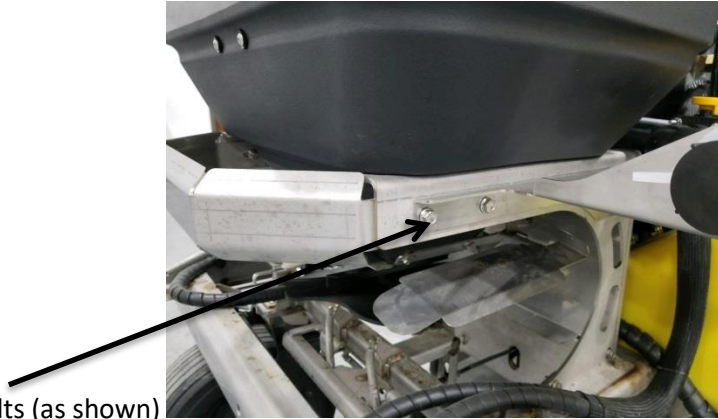
Step 13: Tighten down 2" SSLN.

Step 14: Attach plumbing assembly to the frame. Using 4 - 1/4"-20 x 3/4" SS Hex Bolt, 8 1/4" SS washers and 4 - 1/4"-20 SS Locknut.

Step 15: Attach two 1" MPT x 3/4" Elbow Hose Barbs to open end 1" Bolted Ball Valves.

Front Bracket assembly is now completed.

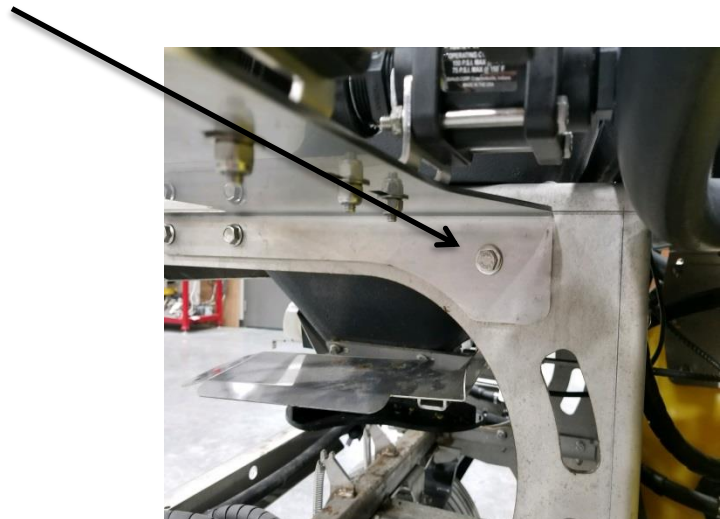
## **Instructions to Set-up Z-Spray Unit**



Step 1: Remove two front bolts (as shown)

Step 2: Using same bolts mount the front bracket assembly to Z-Spray frame. Hand-tighten.

Step 3: Slide one 5/16" Hex Bolt thru one 5/16" Washer thru last hole on the bracket and the Z-Spray frame (as shown).



Step 4: Attach 2" x 2" square washer to the bolt/washer from Step 3. Attach 5/16" washer and 5/16" Locknut and tighten down.

Step 5: Tighten down bolts from Step 2.

Step 6: Replace 2 stock lids with two "Step Vent" lids.

Left Tank



Right Tank



Step 7: Drill 1.25" hole in each tank.

Left Tank

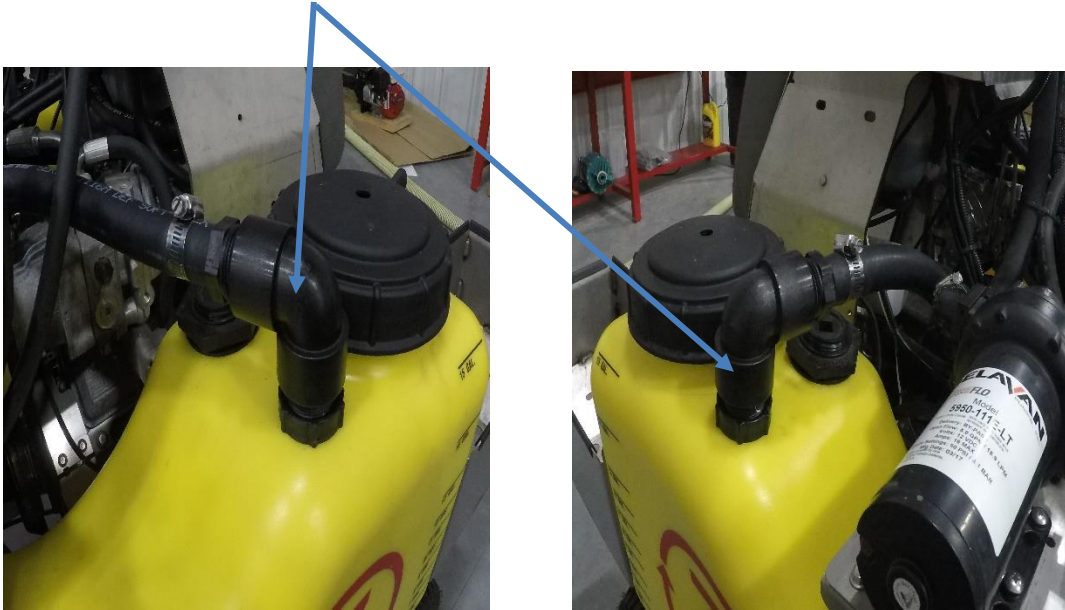


Right Tank



Step 8: Mount a float in each tank and tighten nut on outside of the tank so that the float valve stays in position, (Keep float ball away from sides of tank).

Step 9: Install 1" Elbow onto Float Valve.



Step 10: Install 1" MPT x 3/4" Straight hose barb into each Elbow.

Step 11: Route hoses, cut to length, install on barb and tighten hose clamps.

